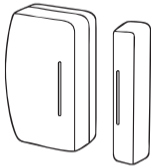


Door Sensor

Sensor de puerta



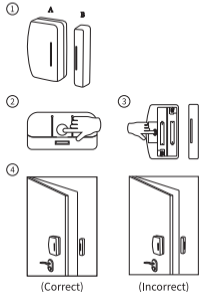
Mounting Kit



Screw x4

Battery x2

Double-sided Tape



(Correct)

(Incorrect)

Setting up your Door Sensor

1. Follow instructions and get your compatible Zigbee hub setup.
2. The Door Sensor comes with two-parts, A and B (Figure ①). Press the button at the bottom of part A to open its rear cover (Figure ②). Then Insert two AAA batteries inside the sensor.
3. Configure the Door Sensor with your Zigbee hub. (For help and troubleshooting related to configure device with Zigbee hub, visit the hub's user manual)
4. To factory reset the sensor, long press the inside button of the sensor to place it in pairing mode (Figure ③). Release the hold when you see the red LED turn on. After you release the hold, LED will change to a blue fast blinking light that indicates the sensor is now ready to be setup.
5. Replace part A's rear cover and make sure it is closed well.

Using your Door Sensor

1. Clean and dry the installation area. Remove the protective layer of double-sided tape and adhere Sensor Part A and Sensor part B to the door and door frame as shown. Please ensure that the two parts' horizontal installation gap is less than or equal to 5/8 inches (Figure ④).

*Sensors are designed for indoor use only and not for use with iron doors or gates. The two small marks on both parts should be aligned and facing each other.

2. When the door opens, you will receive a alert on your phone.

For troubleshooting, warranty and safety information, visit www.3reality.com/devicesupport